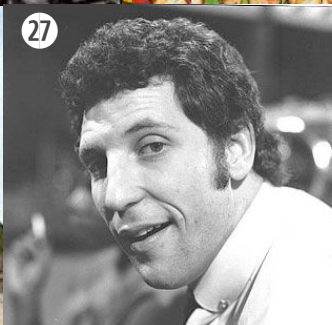
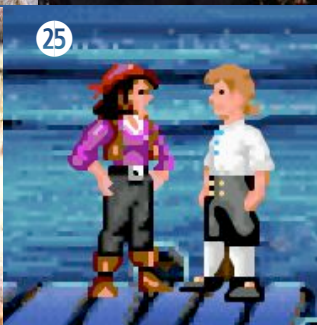
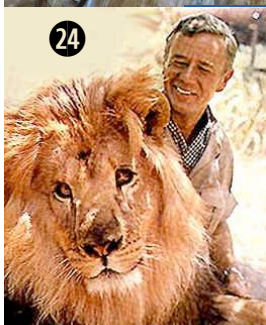
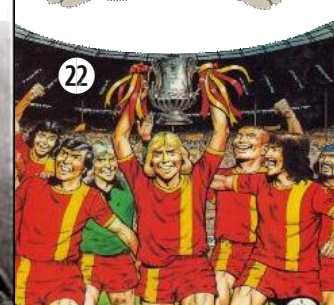
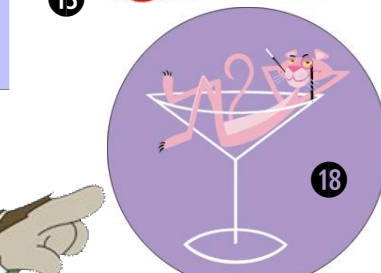


# JUNGLE ANIMALS



# JUNGLE ANIMALS



Name: .....  
Address: .....  
Telephone: .....

- |          |          |
|----------|----------|
| 1. ....  | 16. .... |
| 2. ....  | 17. .... |
| 3. ....  | 18. .... |
| 4. ....  | 19. .... |
| 5. ....  | 20. .... |
| 6. ....  | 21. .... |
| 7. ....  | 22. .... |
| 8. ....  | 23. .... |
| 9. ....  | 24. .... |
| 10. .... | 25. .... |
| 11. .... | 26. .... |
| 12. .... | 27. .... |
| 13. .... | 28. .... |
| 14. .... | 29. .... |
| 15. .... |          |

Each picture forms a clue to a subject either with a jungle animal in its name.  
Write the full description of your best guess against each number.  
Completed entries may be posted in the competition box on the day of the fair.  
Entries may also be handed to a member of the SGSA committee or posted in the  
box which will remain by the school reception until 15:15 on Friday May 19th 2007.  
The winner will be drawn from those sheets with the most correct answers and  
announced on the school notice board. You can see the answers to this and  
previous years' quizzes at <http://whatfettle.com/Quiz>  
Needless to say, the judges' decision is final.

# JUNGLE ANIMALS

## ANSWERS

1. Tiger Woods
2. Richard the Lion Heart
3. Snakes on a Plane
4. Crocodile Dundee
5. Tony the Tiger
6. Batman
7. Elmer the Elephant
8. Leo the Lion
9. Parsley the Lion
10. White Stripes - Elephant
11. Monty Python
12. The Vulture
13. Hungry, Hungry Hippos
14. Snake Plissken
15. Crocodile Shoes
16. Panther Tank
17. Evil Monkey
18. Pink Panther
19. Bear Grylls
20. The Jackal
21. Elephant Man
22. Tiger Comic
23. The Tiger who came to Tea
24. Clarence the Lion
25. Monkey Island
26. Planet of the Apes
27. "Tiger"
28. Cheetah the Monkey
29. The Leopard -  
Giuseppe Tomasi di Lampedusa
30. Sunbeam Tiger
31. The Lion the Witch  
and the Wardrobe

Congratulations to our winner, Kasia Watson!